

# Lawrence County School District Calendar 2024-2025 (Alternate)

July 2024						
Su	M	Tu	W	Th	F	Sa
	1	2	3	4	5	6
7	8	9	10	11	12	13
14	15	16	17	18	19	20
21	22	23	24	25	26	27
28	29	30	31			

August 2024						
Su	M	Tu	W	Th	F	Sa
				1	2	3
4	5	6	7	8	9	10
11	12	13	14	15	16	17
18	19	20	21	22	23	24
25	26	27	28	29	30	31

September 2024						
Su	M	Tu	W	Th	F	Sa
1	2	3	4	5	6	7
8	9	10	11	12	13	14
15	16	17	18	19	20	21
22	23	24	25	26	27	28
29	30					

October 2024						
Su	M	Tu	W	Th	F	Sa
		1	2	3	4	5
6	7	8	9	10	11	12
13	14	15	16	17	18	19
20	21	22	23	24	25	26
27	28	29	30	31		

November 2024						
Su	M	Tu	W	Th	F	Sa
					1	2
3	4	5	6	7	8	9
10	11	12	13	14	15	16
17	18	19	20	21	22	23
24	25	26	27	28	29	30

December 2024						
Su	M	Tu	W	Th	F	Sa
1	2	3	4	5	6	7
8	9	10	11	12	13	14
15	16	17	18	19	20	21
22	23	24	25	26	27	28
29	30	31				

July	
4	Independence day

August	
5-8,13	Professional Development (5)
14	First Day of School

September	
2	Labor Day
20	Parent Teacher Conf

October	
11	End of Quarter 1 (41 Days)
14	Begin Quarter 2

November	
25-29	No School- Thanksgiving Break

December	
20	End Quarter 2 (45 Days)
23-31	No School- Christmas Break

January 2025						
Su	M	Tu	W	Th	F	Sa
			1	2	3	4
5	6	7	8	9	10	11
12	13	14	15	16	17	18
19	20	21	22	23	24	25
26	27	28	29	30	31	

February 2025						
Su	M	Tu	W	Th	F	Sa
						1
2	3	4	5	6	7	8
9	10	11	12	13	14	15
16	17	18	19	20	21	22
23	24	25	26	27	28	

March 2025						
Su	M	Tu	W	Th	F	Sa
						1
2	3	4	5	6	7	8
9	10	11	12	13	14	15
16	17	18	19	20	21	22
23	24	25	26	27	28	29
30	31					

April 2025						
Su	M	Tu	W	Th	F	Sa
		1	2	3	4	5
6	7	8	9	10	11	12
13	14	15	16	17	18	19
20	21	22	23	24	25	26
27	28	29	30			

May 2025						
Su	M	Tu	W	Th	F	Sa
				1	2	3
4	5	6	7	8	9	10
11	12	13	14	15	16	17
18	19	20	21	22	23	24
25	26	27	28	29	30	31

June 2025						
Su	M	Tu	W	Th	F	Sa
1	2	3	4	5	6	7
8	9	10	11	12	13	14
15	16	17	18	19	20	21
22	23	24	25	26	27	28
29	30					

January	
1-3	No School- Christmas Break
6	Professional Development (6)
7	Begin Quarter 3
20	Professional Development (no school MLK) (7)
20	Make Up Snow Day 1

February	
21	Parent Teacher Conf

March	
7	End Quarter 3 (42 Days)
10	Begin Quarter 4
21-28	No School- Spring Break

April	
18	Good Friday
18	Make Up Snow Day 2

May	
11	Baccalaureate
12	Graduation
16	End Quarter 4- Last day of school (43 Days)
19-21	Professional Development (8-10)
19-21	Make Up Snow Day 3-5
26	Memorial Day

June	
10	Professional Development Days
2	Parent Teacher Conf. Days

178 School Days = 1068 Instructional Hours  
 171 Student Days = 6.25 hours per day (375 minimum)  
 = 1068.75 hours

## Walnut Ridge School Telephone Numbers

Elementary Building	886-3482
Middle Level Building	886-6697
High School Building	886-6623
Superintendent Office	886-6634
Bus Shop	886-2571
Cafeteria	819-0555
Parent Center	819-0443

### **WALNUT RIDGE SCHOOL ADMINISTRATION**

Superintendent ..... Terry Belcher  
High School Principal (7-12) ..... Jacob Kersey  
Asst. Principal (K-12)..... Jason Belcher  
Elem. Principal (K-6) ..... Lea Andra Foster

### **LAWRENCE COUNTY SCHOOL BOARD OF DIRECTORS 2024-2025**

Vickie Mitchell, Joe Penn, Pat  
Roby, Brittany Farmer, Greg Gill,  
Adam Davis, Scott Brady



[www.bobcats.k12.ar.us](http://www.bobcats.k12.ar.us)

# LAWRENCE COUNTY SCHOOL DISTRICT

Walnut Ridge Public Schools  
(870) 886-6634  
508 East Free  
Walnut Ridge, AR 72476

---

August 14, 2024

Dear Parents,

The Lawrence County School District receives federal funds for Title I, Part A programs. Throughout the school year, we will be providing you with important information about this law as it relates to your child's education. This letter lets you know about your right to request information regarding the professional qualifications of the classroom staff working with your child. Our district or school will be able to provide you with the following information regarding the qualifications of your child's teacher(s):

- Whether their child's teacher has met state qualification and licensing criteria for the grade levels and subject areas in which the teacher provides instruction.
- Whether the teacher is teaching under emergency or other provisional status through which state qualification or licensing criteria has been waived.
- What baccalaureate/degree/major the teacher has and any other graduate certification or degree major held by the teacher and the field of discipline of the certification.

If at any time your student has been taught for four (4) or more consecutive weeks by a teacher(s) that is not highly qualified, then you will be notified by the school.

You also have the right to request information regarding the qualifications of the paraprofessional(s) assisting your child's teacher(s). If your child is receiving Title I, Part A services from a paraprofessional, then our district or school is able to provide you with the following information:

- Whether the paraprofessional has completed at least two years of study at an institution of higher education.
- Whether the paraprofessional has completed an associate's degree (or higher).
- Whether the paraprofessional has met a rigorous standard of quality through our state's certification procedure for determining the quality of paraprofessional staff.
- Whether the paraprofessional has: (a) the knowledge of and the ability to assist in instructing reading, writing, and mathematics or (b) the knowledge of and the ability to assist in learning activities, such as homework, reading readiness, writing, mathematics, and other support as appropriate.

To request this information please contact your child's school:

Walnut Ridge 870-886-3482 or by e-mail at [leaandra.foster@bobcats.k12.ar.us](mailto:leaandra.foster@bobcats.k12.ar.us)

Should you have any other questions regarding your child's education, please do not hesitate to contact the superintendent's office at 870-886-6634.

Sincerely,

Terry Belcher  
Superintendent  
Lawrence County School District



# Sign up for important updates from Walnut Ridge Elementary School.

Get information for **Walnut Ridge Elementary School** right on your phone—not on handouts.

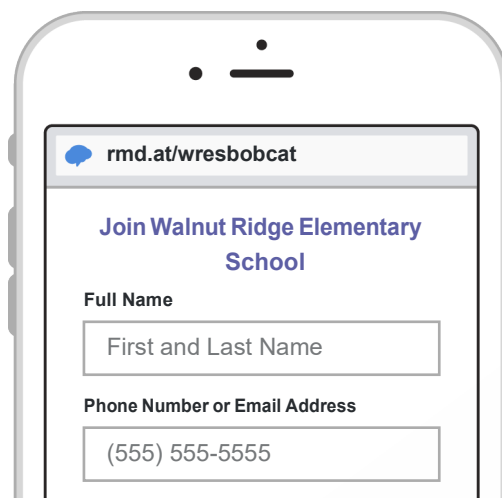
Pick a way to receive messages for **Walnut Ridge Elementary School**:

**A** **If you have a smartphone, get push notifications.**

On your iPhone or Android phone, open your web browser and go to the following link:

[rmd.at/wresbobcat](https://rmd.at/wresbobcat)

Follow the instructions to sign up for Remind. You'll be prompted to download the mobile app.



**B** **If you don't have a smartphone, get text notifications.**

Text the message [@wresbobcat](https://wresbobcat) to the number **81010**.

If you're having trouble with **81010**, try texting [@wresbobcat](https://wresbobcat) to **(931) 269-0514**.

*\* Standard text message rates apply.*



**Don't have a mobile phone?** Go to [rmd.at/wresbobcat](https://rmd.at/wresbobcat) on a desktop computer to sign up for email notifications.



# Sign up for important updates from Walnut Ridge Middle School.

Get information for **Walnut Ridge Middle School** right on your phone—not on handouts.

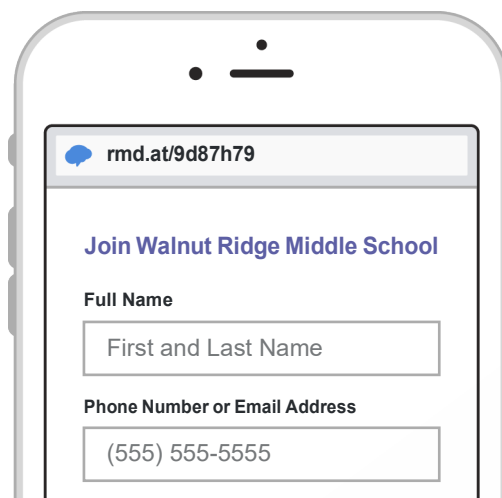
Pick a way to receive messages for **Walnut Ridge Middle School**:

**A** **If you have a smartphone, get push notifications.**

On your iPhone or Android phone, open your web browser and go to the following link:

[rmd.at/9d87h79](https://rmd.at/9d87h79)

Follow the instructions to sign up for Remind. You'll be prompted to download the mobile app.



**B** **If you don't have a smartphone, get text notifications.**

Text the message [@9d87h79](https://t.me/9d87h79) to the number **81010**.

If you're having trouble with **81010**, try texting [@9d87h79](https://t.me/9d87h79) to **(931) 269-0514**.

*\* Standard text message rates apply.*



**Don't have a mobile phone?** Go to [rmd.at/9d87h79](https://rmd.at/9d87h79) on a desktop computer to sign up for email notifications.



# Sign up for important updates from Walnut Ridge High School.

Get information for **Walnut Ridge High School** right on your phone—not on handouts.

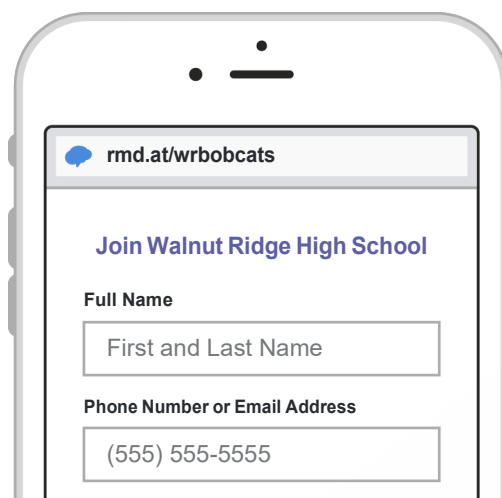
Pick a way to receive messages for **Walnut Ridge High School**:

**A** **If you have a smartphone, get push notifications.**

On your iPhone or Android phone, open your web browser and go to the following link:

[rmd.at/wrbobcats](https://rmd.at/wrbobcats)

Follow the instructions to sign up for Remind. You'll be prompted to download the mobile app.



**B** **If you don't have a smartphone, get text notifications.**

Text the message [@wrbobcats](https://t.me/wrbobcats) to the number **81010**.

If you're having trouble with **81010**, try texting [@wrbobcats](https://t.me/wrbobcats) to **(931) 269-0514**.

*\* Standard text message rates apply.*



**Don't have a mobile phone?** Go to [rmd.at/wrbobcats](https://rmd.at/wrbobcats) on a desktop computer to sign up for email notifications.

**LAWRENCE COUNTY SCHOOL DISTRICT  
MISSION STATEMENT**

It is the mission of the Lawrence County School District to develop the ability of all students by motivating, challenging, and fostering independent learning. To accomplish this mission, the Lawrence County School District will ensure a positive educational environment that enhances learning, fosters growth, and provides opportunities for all students and faculty to exceed and excel beyond the educational setting.

**LAWRENCE COUNTY SCHOOL DISTRICT  
COMPACT  
Parents for Excellence**

**LAWRENCE COUNTY SCHOOL DISTRICT'S PLEDGE:**

Lawrence County Schools are committed to the belief that all children can learn and acknowledge that all of us – teachers, administrators, and parents –working together can make a positive difference in student achievement. The school district will provide an optimum learning environment in which students will experience success and achieve excellence in learning.

**PARENT'S PLEDGE:**

As parents, we want our children to have the best possible education and realize that strong school systems are essential. We, therefore, join with the Lawrence County School District in providing an optimum learning environment for our children.

- 1) I will insist that all homework assignments are done each night.
- 2) I will discuss at some point each day what my child has learned at school each day.
- 3) I will remind my child of the necessity of discipline in the classroom – especially self-discipline.
- 4) I will provide for my child a period of uninterrupted time which will be devoted to an instructional activity.

PARENT Signature \_\_\_\_\_

STUDENT Signature \_\_\_\_\_

TEACHER Signature \_\_\_\_\_

PRINCIPAL Signature \_\_\_\_\_

# Parental Involvement Plan

---

Walnut Ridge Elementary & Walnut Ridge High Schools

2024-2025

Abridged version of the LCSD Parental Involvement Plan. The complete version can be found at <http://www.bobcats.k12.ar.us/view/walnut-ridge-elementary-plan> or <http://www.bobcats.k12.ar.us/view/walnut-ridge-high-plan>. If you would like a copy of or more information about the Parent Involvement Policy or information about the Parent Center, contact Dyan Heard at 870-819-0441 or Lindsey Romine at 870-819-0443.



## Lawrence County School District Parent Involvement Policy

**Lawrence County School District (LCSD)** will involve parents in regular, two-way meaningful communication addressing student achievement and ensuring:

- that parents play an integral role in assisting their child's learning
- that parents are encouraged to be actively involved in their child's education
- that parents are full partners in their child's education and are included, as appropriate, in decision-making and on advisory committees to assist in the education of their child.

In compliance with Section 1118(a)(2), of the Elementary and Secondary Education Act (ESEA), **LCSD** agrees to implement required statutory requirements to:

- Involve parents in the joint planning and development of the district's Title I plan through representation on the district ESEA team and participation in fall and spring ESEA meetings.
- Involve parents in an Annual Local Review of the Title I Program and use the results of the Annual Review to address any identified barriers to parental participation. The Annual Review will be conducted each spring and will include an analysis of state and local assessment data, a review of grade level needs and services provided, parent/teacher/and/or student survey data, and a summary analysis of the effectiveness of Title I Services.
- Involve parents in the development, implementation, and review of Parent-School Compacts. The compact will be discussed and signed during fall parent-teacher conferences and reviewed during spring conferences. The compact will also be posted on the district website.
- Involve parents in the planning and development of effective parent involvement activities through representation on each building's Title I Needs Assessment/Evaluation Committee or Schoolwide Committee. Committee meetings will be scheduled flexibly with the scheduling needs of parents in mind.
- Build the schools' and parents' capacity for parent involvement by:
  - providing parents with information on state standards, assessments, requirements of Title I, monitoring their child's progress, and working with educators. Information will be provided during an annual fall meeting, through quarterly progress notices, at parent-teacher conferences, in the district newsletter, and on the district website.
  - providing materials, resources and training to help parents work with their children to improve academic achievement. Resources will be provided in classroom newsletters and communications, through the school website, and the Parent Center. Parent trainings and family education nights will be planned each year based on the school needs assessment and may include a family Literacy Night, Math Night, etc.
  - communicating regularly with parents in clear and understandable terms. This will include opportunities for parents to participate in decision-making roles, volunteer opportunities, classroom newsletters, an annual parent survey, parent-school compacts, and parent-teacher conferences. Parent-teacher meetings will be scheduled at any time, as requested by parents.
  - coordinating parent involvement activities with other initiatives including HeadStart, after-school programs, etc.

The **LCSD Parental Involvement Policy** has been developed jointly with, and agreed on with, parents of children participating in Title I programs as evidenced by meeting minutes.

# Bobcat Faculty



## Elementary Building

### Office

Lea Andra Foster  
Jason Belcher  
Cameron Priest  
Natalie Ezell

Principal  
K-12 Assistant Principal  
Counselor  
Secretary

### Kindergarten

Kristy Nichols  
Emily Sheets  
Amanda Moskop  
Morgan Stone

### First Grade

Heather Dickson  
Kera Kelly  
Natosha Ward  
Erin Manning  
Amanda Henry

### Second Grade

Mary Beth Dickson  
Sarah Hudson  
Stephan Miller  
Sarah Haney

### Third Grade

Ali Carey  
Jennifer Brown  
Emily Herring  
Hannah Morgan

### Fourth Grade

Jessica Richey  
Madalyn Heard  
Makayla Durham  
Sarah Parnell

### Resource

Michelle Smelser  
Leslie Rutledge

### Reading

Interventionist  
Jessica Light  
Heather C. Dickson

### Title I

Dyan Heard

### Library

Keely Huskey

### Literacy Coach

Brooke Bramlett

### Art

Jean Fowler

### GT Coordinator

Susan Ashlock

### Cafeteria

Kristal Jones  
Angie Trinidad  
Tammy Winfrey  
Samantha Burton  
Pam Smith  
Lila Cook  
Kelli Porter  
Destiny Watson

### Aides

DeeDee Bridges  
Jill Caldwell  
Terri Stevens  
Teri Jones  
Jennifer Smith  
Rebecca Shipman  
Jessica Harris  
Mary Davis  
Henrietta Williams  
Harley Burgett  
Larah Fry  
Jessica Horn  
Rebecca Catron

### Music

Elisabeth Schoenecke

### School Nurse

Anna Lou Shaw  
Stephanie Nichols

### ESOL Testing/Math Intv

Jenny Andrews

### Physical Education

Seth Hart  
Andrew Meyer  
Will Weir

### Parent Center

Dyan Heard Facilitator  
Lindsey Romine Coordinator

# Bobcat Faculty



## Middle Level Building

### Office

Lea Andra Foster  
Jacob Kersey  
Jason Belcher  
Jennifer Roark  
Susan Doyle

Principal (Grades 5-6)  
Principal (Grades 7-8)  
K-12 Assistant Principal  
Counselor  
Secretary

### Language/Reading

Marcia Martin  
Tralee Ellington  
Courtney Coffman  
Travis Fleming

### Math

Hollie Thielemier  
Tashena Tate  
Rebecca Bullard  
Megan Cole

### Health

Jason Ward

### Social Studies

Natalie Wallin  
Grant Smith  
Felissa Craig

### Special Education

Amy Privett  
Sarah Hoffman  
Angie Simmons-Aide  
Candis White-Aide  
Callie Broadway-Aide

### Art

Jean Fowler  
Jamie Farrar

### Science

Tracy Jared  
AnnMarie Brogdon  
Felissa Craig

### Music

Elisabeth Schoeneche  
Nick Weber

### Physical Education

Blake Coffman  
Jason Ward  
Andrew Meyer  
Sarah Moore  
Vanessa Hufstedler

### GTC Coordinator

Susan Ashlock

### Band

John Long

### Business

Stacy Owens  
Angela Horner

### Title I

Dyan Heard

### Library

Hillary Anderson

### Math Interventionist

Angela Brady

### Parent Center

Dyan Heard- Facilitator  
Lindsey Romine- Coordinator

### School Nurse

Anna Lou Shaw  
Stephanie Nichols

### Reading Interventionist

Kristy Bateman  
DeeDee Bridges –Aide

# Bobcat Faculty



## High School Building

### Office

Jacob Kersey	Principal
Jason Belcher	K-12 Assistant Principal
Debbie Findley	Counselor
Shelia Britton	Secretary
Stephanie Denton	Student Attendance/Data Entry

### Teachers

Denee Wheelless	Biology/AP Biology/Environmental
Jamie Farrar	Science Art
Courtney Smith	Social Studies
Joe Fisher	Math/Athletics
Tracy Hallman	English/Oral Comm
Alyssa Paskel	Algebra I/Geometry
Dr. Ellen Holloway	Chemistry/Physics/Physical Sci.
Malessie Milton	Special Education
Becky Robinson	English/AP English
Lindy Baker	Remediation
Joey Rice	Agri/Sci. &Tech
John Long	Band
Nick Weber	Chorus
Stacy Rice	English/Journalism
Mary Smith	Librarian
DeAnna Steele	Special Education
Linda Smith	U.S. Gov't/American History
Vanessa Hufstedler	Business Education/Athletics
Tommy Ford	Civics/Economics /Drivers Ed.
Skip Dulaney	Athletics
Ashton Roby	English
Jerry Haynes	Algebra II/Pre-AP Algebra II
Schelley Davis	EAST
Will Weir	P.E./Athletics
Sarah Moore	Health /P.E./Athletics
Tyler Roby	Computer Science/ALE

### Aides

Latricia Meyer  
Emily Archer

# WALNUT RIDGE SCHOOL

## PARENT CENTER SURVEY

Walnut Ridge School is committed to parental involvement within our school system. Parents are welcomed and encouraged to be involved in their child's education. This survey is to help us improve and better understand your needs. Please complete the form and return to the school with your child or mail to Walnut Ridge School, Attn: Parent Center, 508 East Free Street, Walnut Ridge, AR 72476. Thank you in advance for your time.

1. Are you aware the Parent Center provides materials and services for parents to aid their children with homework and school projects?

\_\_\_ YES \_\_\_ NO

2. Are you aware the Parent Center is available to parents with children in Kindergarten through 12<sup>th</sup> grades?

\_\_\_ YES \_\_\_ NO

3. Are you aware the materials in the Parent Center are available for your use free of charge?

\_\_\_ YES \_\_\_ NO

4. Are you interested in utilizing the Parent Center for educational or parenting needs?

\_\_\_ YES \_\_\_ NO

If yes, what time of day would be the most convenient for you to use the Parent Center?

\_\_\_ MORNING \_\_\_ NOON \_\_\_ AFTERNOON \_\_\_ EVENING

5. Would you be willing to volunteer some of your time at the Parent Center?

\_\_\_ YES \_\_\_ NO

6. Would you be interested in attending parent meetings (approx. 1 hr. in length)?

\_\_\_ YES \_\_\_ NO

If yes, which would be the best time for you to attend parent meetings?

\_\_\_ MORNING \_\_\_ EVENING

The Parent Center provides parent meetings throughout the school year. Please check any areas in which you are interested in or that would benefit you the most.

\_\_\_ Homework Strategies

\_\_\_ Volunteering

\_\_\_ Health/Nutrition

\_\_\_ Internet Safety

\_\_\_ Family Relationships

\_\_\_ Single Parenting

\_\_\_ Managing Stress

\_\_\_ Other \_\_\_\_\_

Materials in the Parent Center range from preschool through 12<sup>th</sup> grade, along with a variety of parenting books. If you would like to see more materials in a specific area, please list.

\_\_\_\_\_

Please check the appropriate grade level(s) of your child(ren) enrolled in Walnut Ridge School.

\_\_\_ Kindergarten - 6<sup>th</sup> grade

\_\_\_ 7<sup>th</sup> -12<sup>th</sup> grade

# Walnut Ridge School Volunteer Information Sheet

We are looking for parents and other adults who are committed to supporting Walnut Ridge School by helping to provide the community's children with the best possible education. Our school gives students a variety of opportunities for challenge and enrichment, but we could do even more with your help.

We invite you to participate in our volunteer program. Could you spend an hour a week during story time, helping students with an art project, tutoring a child, or volunteering in the parent center? Could you speak to classes about your business or hobby when they are studying a related topic? We have a need that you could fill.

Please check any areas which you would be interested in volunteering:

Reading with a student     Parent Center     Volunteer from home  
 Tutoring a student     Teacher Helper

Do you have an age level you would prefer to work with? \_\_\_\_\_

Would you be interested in speaking to a class about your business or hobby? \_\_\_\_\_  
If so, what is your business or hobby? \_\_\_\_\_

Circle which time of day would be most convenient for you to volunteer:

Morning

Afternoon

Either

Name \_\_\_\_\_ Phone Number \_\_\_\_\_

Address \_\_\_\_\_

Child(ren) you have enrolled in our school

Name \_\_\_\_\_ Grade \_\_\_\_\_    Name \_\_\_\_\_ Grade \_\_\_\_\_

Name \_\_\_\_\_ Grade \_\_\_\_\_    Name \_\_\_\_\_ Grade \_\_\_\_\_

## Volunteer Survey

We love volunteers at Walnut Ridge School and we want you! In addition to providing important services to the school, volunteering provides a chance to meet and work with other parents and staff. If you are interested in volunteering please fill out this survey and return to school as soon as possible so we can begin putting your talents to use.

I am interested in volunteering **in the classroom** in the areas checked.

- Tutoring Students
- Reading with students
- Working with small groups
- Attending field trips
- Assisting with special events (celebrations, pep rallies)
- Help with class projects
- Appearing as a guest speaker to:
  - Share my profession Please list: \_\_\_\_\_
  - Share my travels Please list: \_\_\_\_\_
  - Share my culture Please list: \_\_\_\_\_
  - Share a talent, skill, or craft List: \_\_\_\_\_

I am interested in volunteering **in other areas**. I'd like to:

- Work in high school library
- Do copying and laminating
- Prepare posters, displays, etc.

I am interested in volunteering **in the parent center** in the areas checked.

- Preparing newsletters
- Copying
- Laminating
- Cutting letters
- Making folder games
- Trim and bundle Box Tops and other labels
- Put together parent information packets
- Assist with Family Movie/Game Nights

I am interested in volunteering by **working at home** in the areas checked.

- Helping prepare materials for the classroom
- Trimming Box Tops, labels, etc.
- Call parents, organize phone trees for special projects

Your Name \_\_\_\_\_

Address \_\_\_\_\_

Phone \_\_\_\_\_

E-mail \_\_\_\_\_

*Please mark an \* by the best method of reaching you when assistance is needed.*

Child(ren) \_\_\_\_\_ Teacher \_\_\_\_\_

\_\_\_\_\_ Teacher \_\_\_\_\_

\_\_\_\_\_ Teacher \_\_\_\_\_

\_\_\_\_\_ Teacher \_\_\_\_\_

Volunteers are asked to attend a volunteer training class. We will contact you on the next available date. If you have any questions, contact Lindsey Romine, Parent Center Coordinator, at 819-0443.





# Walnut Ridge Parent Center

*Providing parents with materials and services to improve children's academic achievement.*

## **\*ABOUT THE PARENT CENTER...**

We are here to help parents by providing a variety of materials for your use when helping your children with school work. We can also help you design specialized materials to help meet your child's specific educational needs.

Parenting materials are also available to check out that cover a variety of topics. Some topics, just to name a few, include ADD/ADHD, homework, discipline, behavior, listening, drug and alcohol prevention, and how to encourage a child to read.

## **\*COST...**

All materials are **FREE** for your use!!!

## **\*VOLUNTEERS...**

Volunteers are also welcome and needed. If you have a willingness to help we could use you on our team!

## **Materials:**

- PARENTING BOOKS
- PAMPHLETS
- VIDEOS
- LEARNING GAMES
- FLASH CARDS
- SCIENCE KITS
- GEO BLOCKS
- LEAPSTER LEAP FROG SYSTEM
- GEO SAFARI
- MUCH, MUCH, MORE

## **Equipment Available:**

- COPY MACHINE
- LAMINATOR
- CUTTING/TRIMMING BOARD
- ELLISON LETTER CUTTING SYSTEM

## **Activities in the Parent Center:**

- Parenting Classes
- Newsletter Production
- Volunteering
- Collecting Box Tops, Best Choice UPC Codes, and Tyson Project A+ Labels

## **LOCATION:**

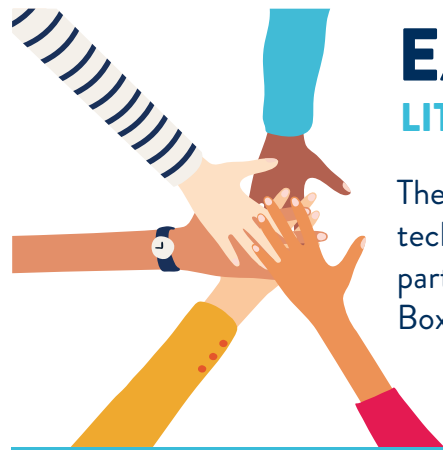
The Parent Center is the middle yellow building between the Middle School and the W.R. Community Center.

## **HOURS:**

We are open throughout the school day. Extended hours available by appointment.

Lindsey Romine, Coordinator  
Dyan Heard, Facilitator





# EARN CASH FOR YOUR SCHOOL

LITTLE BY LITTLE WE CAN MAKE A BIG DIFFERENCE.

The Box Tops mobile app uses state-of-the-art technology to scan your store receipt, find participating products and instantly add Box Tops to your school's earnings online.

LOOK  
FOR THE  
LABEL:

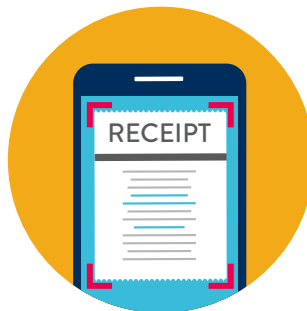


## HERE'S HOW IT WORKS:



### BUY BOX TOPS PRODUCTS

You can find Box Tops on hundreds of products throughout the store.



### SCAN YOUR RECEIPT

Use the app to snap a photo of your receipt within 14 days of purchase.



### EARN CASH FOR YOUR SCHOOL

Box Tops earnings are identified and automatically updated online.

## SHOPPING FOR GROCERIES ONLINE?

You can still earn Box Tops for your school with your e-receipt!

See how at [BTFE.com/emailgroceryreceipts](https://www.btfec.com/emailgroceryreceipts)



## BOX TOPS CLIPS

You may occasionally find an old Box Tops clip on packages in stores. **You can still clip them and send them to school**, as long as each clip has a valid expiration date.

SEE PRODUCTS & LEARN MORE ABOUT  
THE BOX TOPS APP AT [BTFE.COM](https://www.btfec.com)

DON'T HAVE THE BOX TOPS  
APP YET? DOWNLOAD IT NOW:





# RAISING MONEY FOR YOUR SCHOOL IS EASY AS 1-2-3!

1

## SHOP AT YOUR LOCAL COMMUNITY GROCER FOR BEST CHOICE PRODUCTS

Use the Store Locator to find more than 4,400 Best Choice™ family of brand items at more than 3,000 stores in 28 states. Brands include Best Choice™, Clearly by Best Choice™, and Best Choice™ Superior Selections™.

2

## SAVE THE LABELS FROM YOUR PRODUCTS

Clip the labels off your Best Choice™ family of brand products and collect them. Be sure to save the UPC portion.



3

## SEND TO YOUR SCHOOL

Put Best Choice labels in a baggie or envelope.

Please include student name, homeroom teacher, and number of Best Choice labels.

**THANK YOU FOR PARTICIPATING IN THE BEST CHOICE SAVE-A-LABEL**



# WRES Child Care Programs

The Walnut Ridge School District recognizes the needs of our parents in regard to the hours they work and the fact that these hours may not match the regular school day. To help our parents, we provide quality Child Care Programs during the school year and the summer.

**Paw Patch**, a before and after school child care program, is open on days school is in session, unless otherwise noted. In the event school is dismissed early due to inclement weather, Paw Patch will be closed, too.

Eligible children must be enrolled in the Walnut Ridge School District (Kindergarten through 6<sup>th</sup> grade). Fees are based on the number of children in a family and the hours they attend. Children may attend either before school, after school, or a combination of both. They may be enrolled full-time, part-time, or drop in.

Paw Patch opens at 6 am and closes at 6 pm. Children are provided an afternoon snack at no additional charge.

The opening day for **Vacation Station**, a summer child care program, depends on the school calendar. It closes for the summer on or near the end of July.

Any child enrolled at WRES who has had their 5<sup>th</sup> birthday and are enrolled in Kindergarten through the 6<sup>th</sup> grade for the next school year may participate.

Vacation Station opens at 6 am and closes at 6 pm. During the summer, children are provided breakfast, lunch, and a snack at no additional charge. Various field trips and activities may be planned throughout the summer.

Both programs are approved by the Department of Human Services. A special enrollment form to participate in either program must be completed and turned in each year.

To enroll or ask questions for either program, contact Jessica Harris, Director.

Email [jessica.harris@bobcats.k12.ar.us](mailto:jessica.harris@bobcats.k12.ar.us)

Remind App ([www.remind.com](http://www.remind.com)) Class Name: WR Child Care 2024

Class Code: @wrchi



# Are my kids getting enough physical activity?

You know kids need physical activity to grow up strong and healthy.

But did you know it can help them feel better right away?



Better sleep



Better mood



Better grades

And when your kids are feeling good, your life is easier, too. So find ways to help your kids fit more activity into their day.

## How much do they need?

Kids and teens ages 6 to 17 need at least **60 minutes** every day.

Most of it can be **moderate-intensity aerobic activity**. Anything that gets their heart beating faster counts.



At least 3 days a week, encourage your kids to step it up to **vigorous-intensity aerobic activity**.



Is it moderate or vigorous?  
Use the “talk test” to find out.

When you’re being active, try talking:

- ✓ If you’re breathing hard but can still have a conversation easily, it’s **moderate-intensity activity**
- ✓ If you can only say a few words before you have to take a breath, it’s **vigorous-intensity activity**

As part of their daily 60 minutes, kids and teens also need:

### Muscle-strengthening activity

At least 3 days a week



Anything that makes their muscles work harder counts — like climbing or swinging on the monkey bars.

### Bone-strengthening activity

At least 3 days a week



Bones need pressure to get stronger. Running, jumping, and other weight-bearing activities all count.



## My kids are younger than 6. What about them?

Younger kids love to be active naturally!

- Aim to keep them moving 3 hours a day — and more is better
- Limit time when they're just sitting around (like screen time)

## What counts?

Whatever gets them moving!



Encourage active play with friends



Give them rewards for active chores



Sign them up for free or low-cost sports or classes

## Or get active together!



Make your morning walks a race



Dance while dinner's in the oven



Show them your favorite ways to move

Most of all, help them find activities they really like to do!

## It all adds up. And so do the benefits.

Help them get active now, and they'll build healthy habits for life.

So take the first step. Get your kids moving. And when you can, move with them!

Find out how your kids can get 60 minutes of activity every day.

[health.gov/MoveYourWay/Get-Kids-Active](https://health.gov/MoveYourWay/Get-Kids-Active)



## Parent Activities Planned for 2024-2025

The following are parent involvement activities planned for the 2024-2025 school year. More information will be posted on the website and in the newsletters when the event date is near. We look forward to and encourage involvement from all of our parents.

<b><u>Activity</u></b>	<b><u>Date</u></b>
WRHS Orientation (9 <sup>th</sup> Graders & New Students)	August 08
Open House	August 08
Volunteer Training	October
Booster Club	Quarterly
8 <sup>th</sup> Grade Parent Meeting	October
Parent/Teacher Conferences	September 20
Character Parade (Grades K-4)	October
Senior Class Parent Meeting	September 11
Band Parent Association (Grades 6-12)	Fall, Winter, Spring
Book Fair	December
One School, One Book (Grades K-8)	Jan/Feb
Financial Aide Night	February
Parent/Teacher Conferences	February 21
Kindergarten Registration	April
Volunteering	Ongoing
Parent/Teacher Organization	Ongoing

**If you would like a paper copy please contact our office at:**

**Elementary School 870-886-3482**

**Middle School 870-886-6697**

**High School 870-886-6623**